



CARDIFF™
Put Information to Work™



TELEform v8.2 New Feature Highlights

January 2003

Cardiff Software

3220 Executive Ridge Drive
Vista, CA 92083
Tel. 1.888.659.8755
Fax 1.760.936.4800
www.Cardiff.com

Copyright 1997-2003 Cardiff Software Inc.
All rights reserved.



RECOGNITION IMPROVEMENTS.....	3
NEW BARCODE FORMATS	3
SELECTION OF SPECIAL CHARACTERS	4
LEXICAL SPECIFICATION	4
EXPORT OF IMAGE ZONES IN COLOR	5
USABILITY IMPROVEMENTS.....	5
CONTROL CENTER ALERTS.....	6
NEW FORM LEVEL SETTINGS.....	6
SUPPORT FOR EMAIL RETRIEVAL OF IMAGES.....	8
INCREASED RELIABILITY	8
DOCUMENTATION CHANGES AND ADDITIONS.....	8

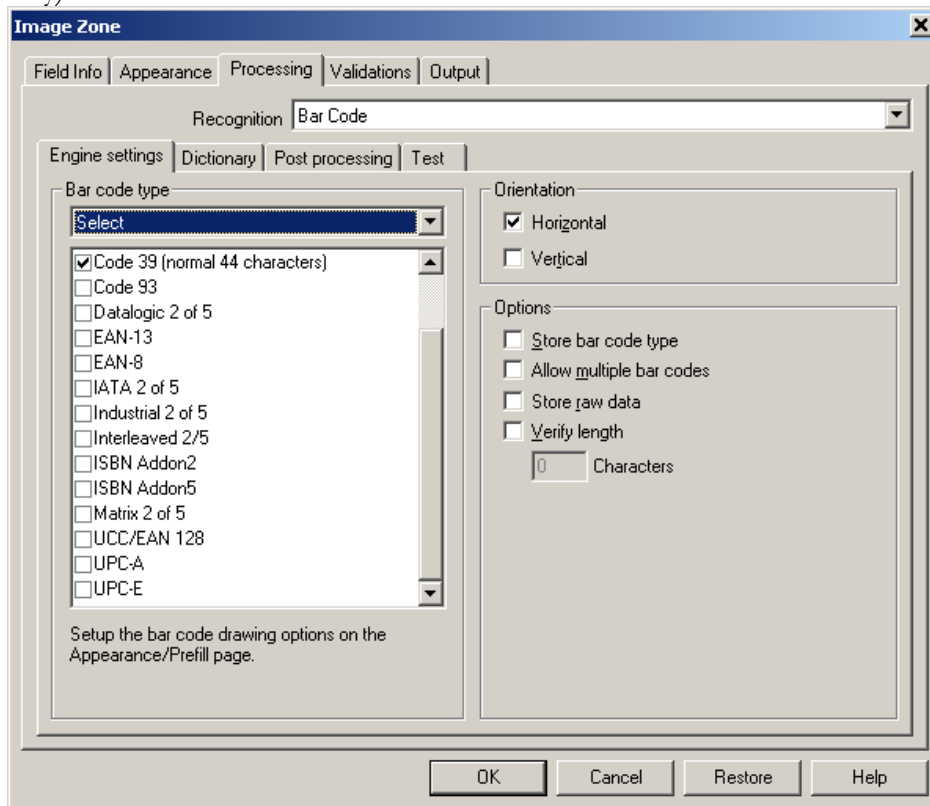
New Feature Highlights – Detailed Description

Recognition Improvements

As part of the v8.2 release of *TELEform*, improvements have been made in recognition, especially for ICR (handprint). Other improvements include full support of the € and £ symbols for our European customers, improved character extraction for constrained hand print, field and existing form identification improvements, and drawing capabilities to the RecoFlex API. Other changes to recognition and validation are:

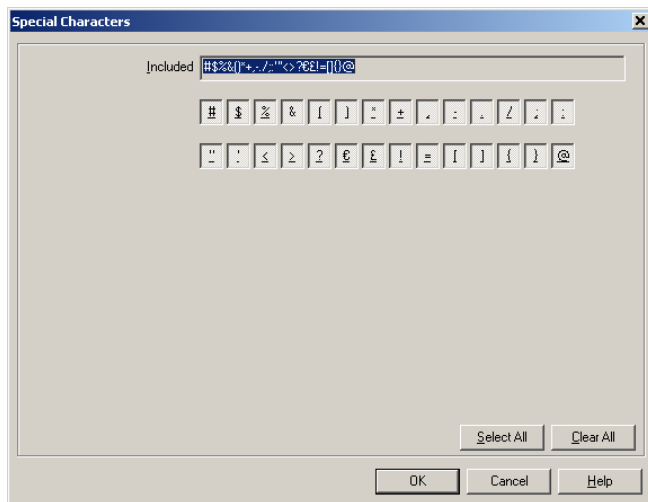
New Barcode Formats

In order to provide more flexibility and accuracy for barcode identification and recognition, addition barcode types have been added to the supported barcode list. Version 8.2 adds support for EAN/UCC 128, ISBN Add-on 2 and 5, Patch code (recognition only), and Industrial, Datalogic, Matrix, IATA 2/5 (recognition only).



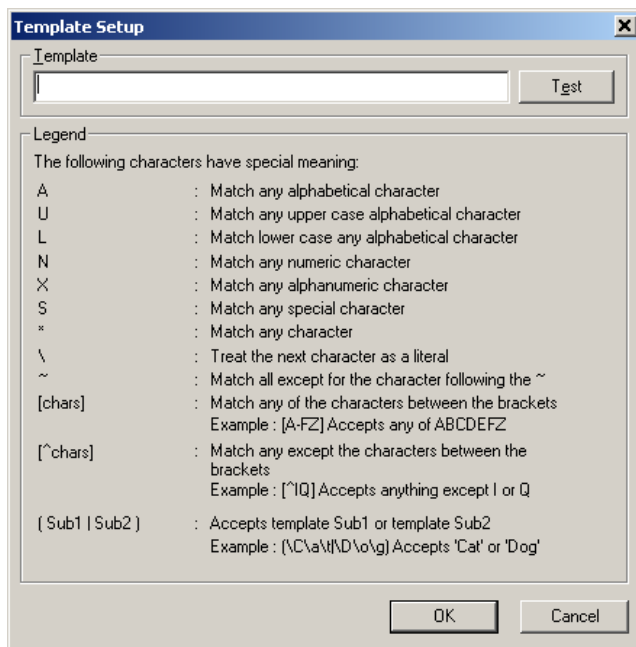
Selection of special characters

In the new version of *TELEform*, accuracy for fields that include special characters can now be improved by selecting the special characters valid for that field when defining the processing for the field. Below is the dialog provided for selection. It is accessed through a button next to the special characters check box.



Lexical specification

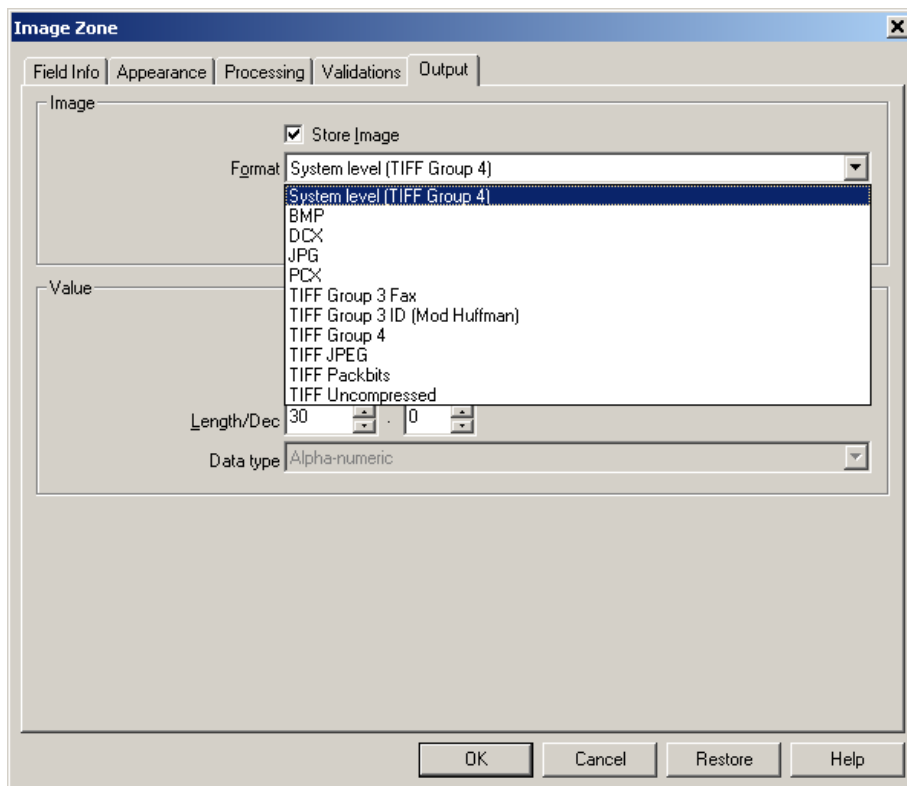
For image zones, advanced character level templates can be set up to improve recognition and accuracy for image zone fields. If an image zone field is configured to read the zone as one line of text, special formatting can be configured with the use of limited regular expressions. Below is a screen shot of the setup dialog.



An example template is, [A-Z^Q], which would allow any uppercase letter from A through Z except for Q. Adding this control to the format of image zone provides more accurate recognition for image zones.

Export of Image Zones in color

Before version 8.2 of *TELEform*, only monochrome clips could be exported from Image Zones. In this latest release, if an image is scanned in color, the image exported from an Image Zone will be exported in color as well. In addition, when a user specifies that an Image Zone clip will be exported, the output format can be specified:

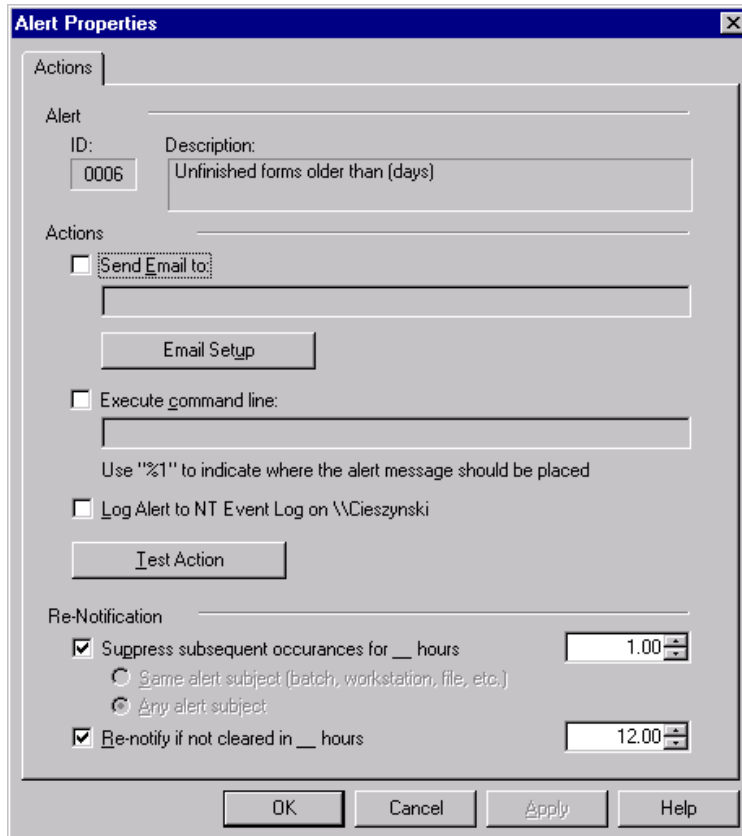


Usability Improvements

Version 8.2 also includes usability improvements to make the user experience better. Some of these improvements include new menu items in right click menus, changes to the Forms Property dialog, and more precise field positioning. Additional features are outlined below:

Control Center Alerts

When alerts are triggered from Control Center, a user can choose a notification method. The notification options include email, command line execution, and NT event log record. The setup dialog for this feature is shown below:



Alert Properties

Alert
ID: 0006 Description: Unfinished forms older than (days)

Actions

Send Email to:
Email Setup

Execute command line:
Use "%1" to indicate where the alert message should be placed

Log Alert to NT Event Log on \\Cieszynski
Test Action

Re-Notification

Suppress subsequent occurrences for __ hours 1.00
 Same alert subject (batch, workstation, file, etc.)
 Any alert subject

Re-notify if not cleared in __ hours 12.00

OK Cancel Apply Help

New form level settings

Another usability feature added for this release is a reorganization of the Forms Properties dialog by function and the addition of a few form-level settings. These include OCR performance as a form level setting, controls so that form level settings can be applied to fields, and Enable verification. The new property sheet tag are shown below:



Properties [X]

Processing | Form Level Settings | **OCR Performance** | Diagnostics | Misc

Evaluation

- Use enhanced recognition
- Bypass verification
- Generate images from electronic receives

Storage

- Save images in correct orientation
- Store evaluated needing review
- Retain evaluated OK until purge

Printing

- Print evaluated OK
- Print evaluated needing review

OK Cancel Restore Help

Properties [X]

Processing | Form Level Settings | **OCR Performance** | Diagnostics | Misc

Appearance

Line width: Form level 15

- Apply to all fields

Processing

OCR/ICR confidence: System level 80

- Apply to all fields

OMR thresholds: System level

Mark Fill Low 25

- Apply to all fields

OK Cancel Restore Help

Properties [X]

Processing | Form Level Settings | **OCR Performance** | Diagnostics | Misc

Advanced Performance Settings

- Override global settings
- Optimized for speed
- Balance speed and accuracy
- Optimized for accuracy
- Apply to all fields

*** Warning ***
Changing these settings from their default values can have a major impact on your TELEform system's performance. Please read the help file and User Guide for information on how to use these settings before making any changes

OK Cancel Restore Help

Properties [X]

Processing | Form Level Settings | **OCR Performance** | Diagnostics | Misc

Settings

- Show evaluation process
- Disable evaluation script
- Disable verification scripts

OK Cancel Restore Help

Properties [X]

Processing | Form Level Settings | **OCR Performance** | Diagnostics | Misc

Other Settings

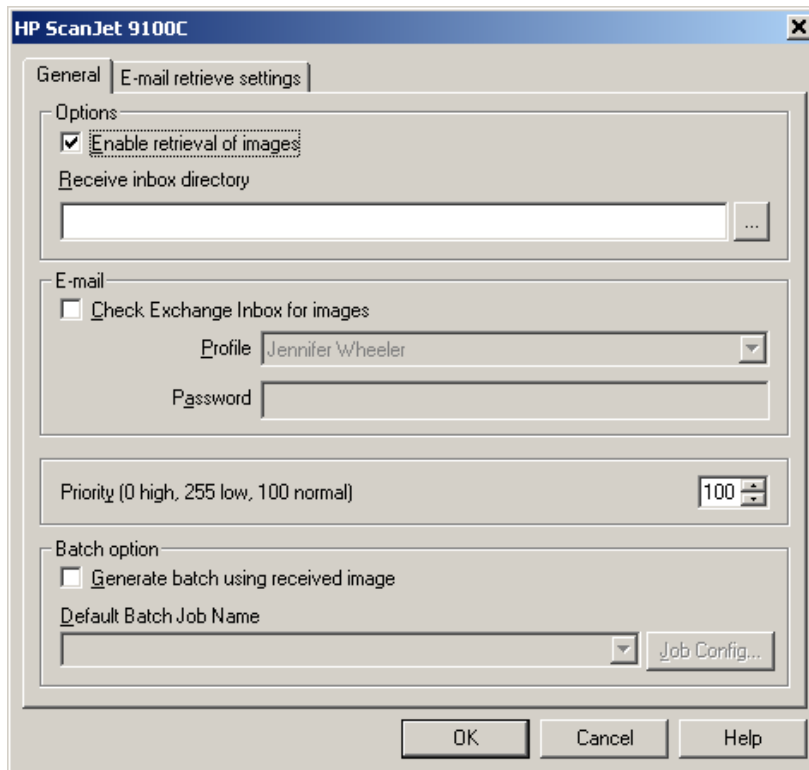
- Use form as a cover sheet

Forms with this property are added to form selection dialogs where cover sheets are required. When selected, the form is de-classified.

OK Cancel Restore Help

Support for email retrieval of images

The Connect Agent for the HP digital sender is now in the Connect Agent Setup list by default. This allows the retrieval of images through email if full MAPI support is available.



Increased Reliability

TELEform has improved resource checking to confirm that the workstation has sufficient disk space and memory resources. The new feature provides several options for responding to low resource conditions. A modal with a retry button will display if there is a resource problem. Every 10 seconds, the resource is checked again and the dialog will close itself if the problem is resolved.

Documentation Changes and Additions

Finally, we have added documents to improve our support of key features in the product. These include a capture tutorial that is included on the TELEform v8.2 CD, a Connect Agent guide that covers the use and development of all Export Connect Agents, and a TELEform to LiquidOffice Integration guide to explain how Cardiff's suite of products work together.